



# PRODUCT CATALOGUE

With Pricing

*Sewak Industries (Regd.)*



[www.sewakttools.com](http://www.sewakttools.com) / [sewakttools.sewak@gmail.com](mailto:sewakttools.sewak@gmail.com)



**Founder**

## **Introduction....**

**Sewak Industries** - a leading manufacturer and exporter of high quality Magnetic, Precision, and Engineering Tools, is an upcoming brand name for the ultimate users of Industrial Tools.

We, at **Sewak Industries** always evolving, exploring new possibilities and realizing new industrial requirements. Our ultimate goal is to cater the growing needs of worldwide industries. We are trying to fulfill the new requirements with the help of our continuous research & development of new industrial products as well as strengthening our existing range.

We specialize in developing products as per specific needs of our vast customer base, spreaded worldwide. All our products are being manufactured as per international quality standards. This is the only reason of our strong presence in Indian and International markets.

**Sewak Industries** is pleased to introduce new range of **Collets for Milling, CNC and Traub Machines**. Also, we have enhanced our Precision Tool range by including a wide variety of Revolving Centres.

In this catalogue we are presenting the above range for customer's guidance, reference & evaluation. We would be glad to hear your suggestion for further improvements, development of new products as well as modifications in the existing range.



**PRODUCTION UNIT**



**PERMANENT MAGNETIC  
CHUCK CLOSE POLE**

## PERMANENT MAGNETIC CHUCK CLOSE POLE

POLE PITCH 15 + 2.5 + 10 + 2.5 = 30 mm

- \* Suitable Economic
- \* Holding Device for surface grinding machine Tools & grinder
- \* Spark Erosion machine & Also for Light Milling
- \* The working fact & bottom face are perfectly parallel
- \* Pole individually magnetized for fully loading power
- \* Pole pitch different 30 mm 15+2.5+10+2.5 mm
- \* Easy operated ON-OFF lever
- \* Bottom plate has suitable extension to clam on table
- \* Better magnetic grip due to close poles
- \* Assembled with powerful Magnets



Code No	Size in (inches)	Size in mm Dia x Height	Number of Pole	Price in (Rupees)
MCCP-46	6x4	150 x 100 x 70	4	4400
MCCP-47	7 x 4	175x100x70	5	4600
MCCP-48	8 x 4	200 x 100 x 70	6	4800
MCCP-510	10 x10	250 x 125 x 70	7	6000
MCCP-612	12 x 12	300 x 150 x 70	9	6000
MCCP-812	14 x 12	300 x 170 x 70	10	9500
MCCP-812	14 x 12	350 x 150 x 70	10	10500
MCCP-814	14 x 14	350 x 150 x 70	10	10500
MCCP-616	16 x 16	400 x 150x70	12	10500
MCCP-618	18 x 18	450 x200x70	12	11000
MCCP-616	18 x 18	450 x 150x70	14	16250
MCCP-820	20 x 20	500 x 200 x 70	15	20000
MCCP-1020	24 x 12	650 x 250 x 70	18	25000
MCCP-1024	24 x 12	750 x 250x70	18	28000
MCCP-1224	24 x 12	750 x 300 x 70	23	35000
MCCP-830	30 x 12	750 x 250 x 70	23	35000
MCCP-1020	30 x 10	750 x 250 x 70	28	42500
MCCP-1224	24 x 12	750 x 250 x 70	28	36000
MCCP-1236	36 x 12	900 x 300 x 70	30	63500
MCCP-1236	40 x 12	1000 x 300x70	30	75000
MCCP-1240	40 x 12	1000 x 300 x 70	30	75000



**PERMANENT MAGNETIC  
CHUCK THRU POLE**

## PERMANENT MAGNETIC CHUCK THRU POLE POLE PITCH 8 + 1 mm



- \* Suitable for hold thin & small jobs
- \* Holding Device for surface grinding machine  
Tools & grinder
- \* Spark Erosion machine & Also for Light Milling
- \* The working fact & bottom face are perfectly parallel
- \* Pole individually magnetized for fully loading power
- \* Pole pitch 8+1 mm
- \* Easy operated ON-OFF lever
- \* Bottom plate has suitable extension to clam on table
- \* Better magnetic grip due to close poles

Code No.	Size in (inches)	Size in mm Die x Height	Price in (rupees)
MCTP-46	6 x 4	150 x 100 x 70	6600
MCTP-47	7 x 4	175 x 100 x 70	6900
MCTP-48	8 x 4	200 x 100 x 70	7200
MCTP-510	10 x 5	250 x 125 x 70	9000
MCTP-612	12 x 6	300 x 150 x 70	12000
MCTP-812	12 x 8	300 x 200 x 70	14250
MCTP-614	14 x 6	350 x 150 x 70	13500
MCTP-814	14 x 8	350 x 200 x 70	15750
MCTP-616	16 x 6	400 x 150 x 70	15000
MCTP-816	16 x 8	400 x 200 x 70	17250
MCTP-618	18 x 6	450 x 150 x 70	16200
MCTP-818	18 x 8	450 x 200 x 70	19500
MCTP-820	20 x 8	500 x 200 x 70	24500
MCTP-1020	20 x 10	500 x 100 x 70	30000

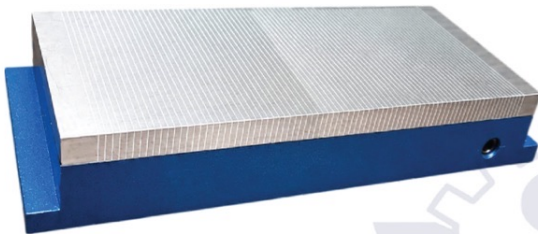


PERMANENT MAGNETIC  
CHUCK FINE POLE



## PERMANENT MAGNETIC CHUCK FINE POLE

POLE PITCH 4 + 1 mm

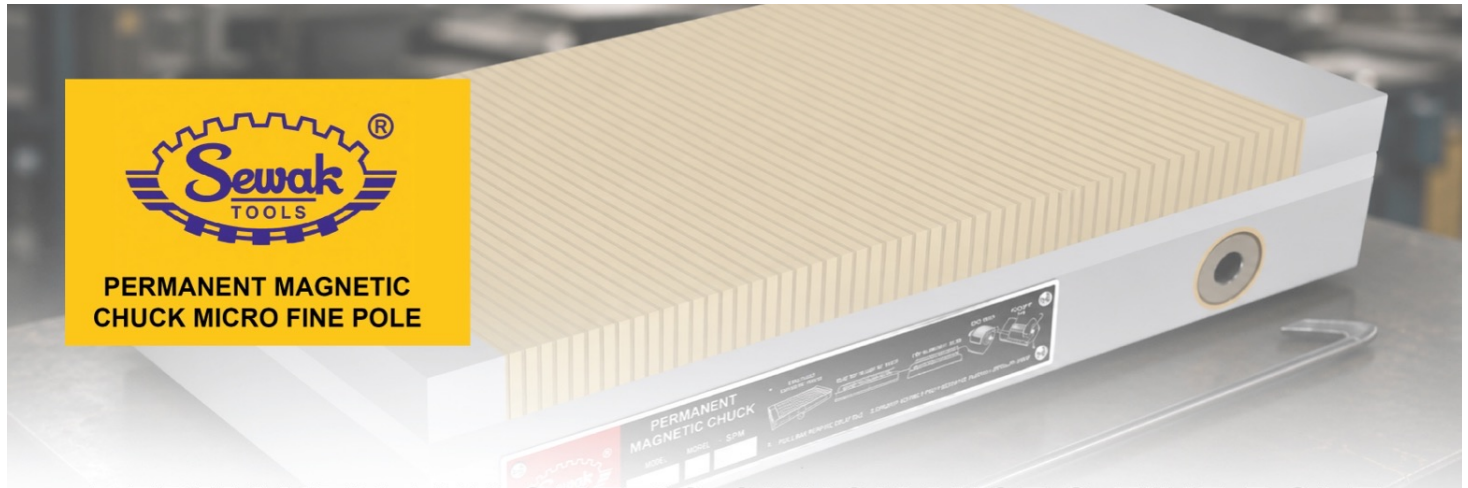


- \* Suitable for hold thin & small jobs
- Holding device for surface grinding machine Tools & grinder
- Spark erosion machine & also for light milling
- The working fact & bottom face are perfectly parallel
- Poles individually magnetized for fully loading power
- Pole pitch 4+1 mm
- Easy operated ON-OFF lever
- Bottom plate has suitable extension to clam on table
- Better magnetic grip due to close poles
- Assembled with powerful Magnet.

Code No.	Size in (inches)	Size in mm Die x Height	Price in (rupees)
MCFP-510	10 x 5	250 x 125 x 70	21000
MCFP-612	12 x 6	300 x 150 x 70	30000
MCFP-812	12 x 8	300 x 200 x 70	39000
MCFP-614	14 x 6	350 x 150 x 70	34000
MCFP-814	14 x 8	350 x 200 x 70	45000
MCFP-616	16 x 6	400 x 150 x 70	40000
MCFP-816	16 x 8	400 x 200 x 70	52000
MCFP-618	18 x 6	450 x 150 x 70	44000
MCFP-818	18 x 8	450 x 200 x 70	60000
MCFP-820	20 x 8	500 x 200 x 70	65000
MCFP-1020	20 x 10	500 x 250 x 70	82000



**PERMANENT MAGNETIC  
CHUCK MICRO FINE POLE**



## PERMANENT MAGNETIC CHUCK MICRO FINE POLE POLE PITCH 1.5 + .5 mm



- Suitable for very small jobs
- Holding device for surface grinding machine Tools & grinder
- Spark erosion machine & also for Light Milling
- The working fact & bottom face are perfectly parallel
- Poles individually magnetized for fully loading power
- Fine pitch 1.5 + 0.5
- Easy operated ON-OFF lever
- Bottom plate has suitable extension to clam on table
- Better magnetic grip due to close poles
- Assembled with powerful Magnet.

Code No.	Size in (inches)	Size in mm (L x W x H)	Price in (Rupees)
MCMF-510	10 x 5	250 x 125 x 70	24,000
MCMF-612	12 x 6	300 x 150 x 70	34,000
MCMF-812	12 x 8	300 x 200 x 70	46,000
MCMF-614	14 x 6	350 x 150 x 70	40,000
MCMF-814	14 x 8	350 x 200 x 70	53,000
MCMF-616	16 x 6	400 x 150 x 70	46,000
MCMF-816	16 x 8	400 x 200 x 70	62,000
MCMF-618	18 x 6	450 x 150 x 70	52,000
MCMF-818	18 x 8	450 x 200 x 70	70,000
MCMF-820	20 x 8	500 x 200 x 70	76,000
MCMF-1020	20 x 10	500 x 250 x 70	96,000



**ROUND MAGNETIC CHUCK CLOSE POLE**

## ROUND MAGNETIC CHUCK CLOSE POLE

POLE PITCH  $15 + 2.5 + 10 + 2.5 = 30$  mm



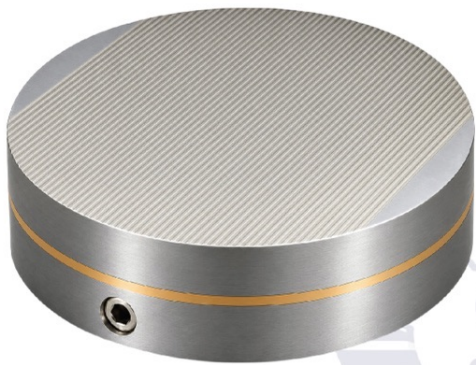
- Holding device for rotary surface grinding and also for lathe & cylindrical grinding.
- IMagnetic pull is 20-40% more than IS specification.
- IAssembled with powerful magnets.
- ION-OFF by allen key

Code No.	Size in (inches)	Size in mm Die x Height	Number of Pole	Price in (rupees)
RMCCCL-4	4"	150 × 70	3	5200
RMCCCL-5	5"	130 × 70	4	6100
RMCCCL-6	6 1/2"	165 × 70	4	6400
RMCCCL-8	8"	205 × 70	5	8200
RMCCCL-10	10"	255 × 70	6	10500
RMCCCL-12	12"	305 × 70	8	14000
RMCCCL-14	14"	355 × 70	9	26000
RMCCCL-16	16"	405 × 70	10	28500
RMCCCL-18	18"	455 × 70	12	42000



ROUND MAGNETIC  
CHUCK FINE POLE

## ROUND MAGNETIC CHUCK FINE POLE POLE PITCH 4 + 1 mm



- Holding device for rotary surface grinding and also for lathe & cylindrical grinding.
- Magnetic pull is 20-40% more than IS specification.
- Assembled with powerful magnets.
- ON-OFF by allen key

Code No.	Size in (inches)	Size in mm (L x W x H)	Price in (Rupees)
RMCFP-4	4"	150 x 70	8,000
RMCFP-5	5"	130 x 70	12,000
RMCFP-6	6 1/2"	155 x 70	18,000
RMCFP-8	8"	205 x 70	32,000
RMCFP-10	10"	255 x 70	48,000
RMCFP-12	12"	305 x 70	70,000
RMCFP-14	14"	355 x 70	94,000
RMCFP-16	16"	405 x 70	120,000
RMCFP-18	18"	455 x 70	152,000



**ELECTRO MAGNETIC CHUCK CLOSE POLE**



## ELECTRO MAGNETIC CHUCK CLOSE POLE POLE PITCH 15 + 2.5 + 10 + 2.5 = 30 mm

- Working Holding device for surface grinding machines. Each Pole is having separate coil as such very strong & even magnetic flux is generated.
- Mag-D-Mag with variable control unit allows to neutralize the residual magnetism precisely using a micro processor based control circuitry.
- Variable supply to very power which helps in alignment & removing of wae pages of thin jobs.
- Chuck is tested for slipping force. Waterproof test! temperature rise test. Electrical & Demagnetizing tests.
- Good quality & standard electrical accessories.

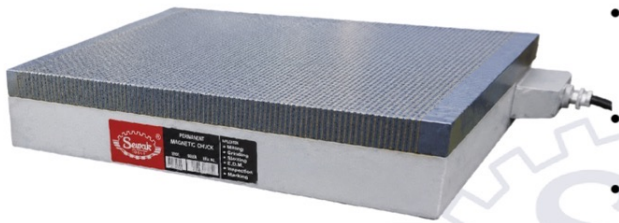


Code No.	Size in (inches)	Size in mm (L x W x H)	Price in (Rupees)
EMCCP-618	18 x 6 x 4	450 x 150 x 100	30,000
EMCCP-818	18 x 8 x 4	500 x 200 x 100	40,000
EMCCP-820	20 x 8 x 4	600 x 200 x 100	45,000
EMCCP-1020	20 x 10 x 4	600 x 250 x 100	56,000
EMCCP-824	24 x 8 x 4	600 x 300 x 100	57,000
EMCCP-1024	24 x 10 x 4	750 x 250 x 100	67,000
EMCCP-1224	24 x 12 x 4	750 x 250 x 100	80,000
EMCCP-1030	30 x 10 x 4	900 x 250 x 100	84,000
EMCCP-1230	30 x 12 x 4	900 x 300 x 110	1,06,000
EMCCP-1040	40 x 10 x 4.3/8	1000 x 250 x 110	1,12,000
EMCCP-1240	40 x 12 x 4.3/8	1000 x 300 x 110	1,32,000
EMCCP-1060	60 x 10 x 4.3/8	1500 x 250 x 110	1,68,000
EMCCP-1260	60 x 12 x 4.3/8	1500 x 300 x 110	2,10,000
EMCCP-1660	60 x 16 x 4.3/8	1500 x 400 x 110	2,80,000



**ELECTRO MAGNETIC  
CHUCK THRU POLE**

## **ELECTRO MAGNETIC CHUCK THRU POLE** POLE PITCH 4 + 1 mm



- Working Holding device for surface grinding machines.
- Each Pole is having separate coil as such very strong & I even magnetic flux is generated.
- Mag-D-Mag with variable control unit allows to neutralize the residual magnetism precisely using a micro processor based control circuitry.
- Variable supply to very power which helps in alignment & removing of wae pages of thin jobs.
- Chuck is tested for slipping force. Waterproof test! temperature rise test. Electrical & Demagnetizing tests.
- Good quality & standard electrical accessories

Code No.	Size in (inches)	Size in mm (L x W x H)	Price in (Rupees)
EMCTP-618	18 x 6 x 4	450 x 150 x 100	45000
EMCTP-818	18 x 8 x 4	500 x 200 x 100	60000
EMCTP-820	20 x 8 x 4	600 x 200 x 100	68000
EMCTP-1020	20 x 10 x 4	600 x 250 x 100	84000
EMCTP-824	24 x 8 x 4	600 x 300 x 100	86000
EMCTP-1024	24 x 10 x 4	750 x 250 x 100	105000
EMCTP-1224	24 x 12 x 4	750 x 250 x 100	120000
EMCTP-1030	30 x 10 x 4	900 x 250 x 100	126000
EMCTP-1230	30 x 12 x 4	900 x 300 x 110	160000
EMCTP-1040	40 x 10 x 4.3/8	1000 x 250 x 110	168000
EMCTP-1240	40 x 12 x 4.3/8	1000 x 300 x 110	202000
EMCTP-1060	60 x 10 x 4.3/8	1500 x 250 x 110	252000
EMCTP-1260	60 x 12 x 4.3/8	1500 x 300 x 110	315000
EMCTP-1660	60 x 16 x 4.3/8	1500 x 400 x 110	420000



**ROUND MAGNETIC  
CHUCK CLOSE POLE**

## **ROUND ELECTRO MAGNETIC CHUCK CLOSE POLE** POLE PITCH $15 + 2.5 + 10 + 2.5 = 30$ mm

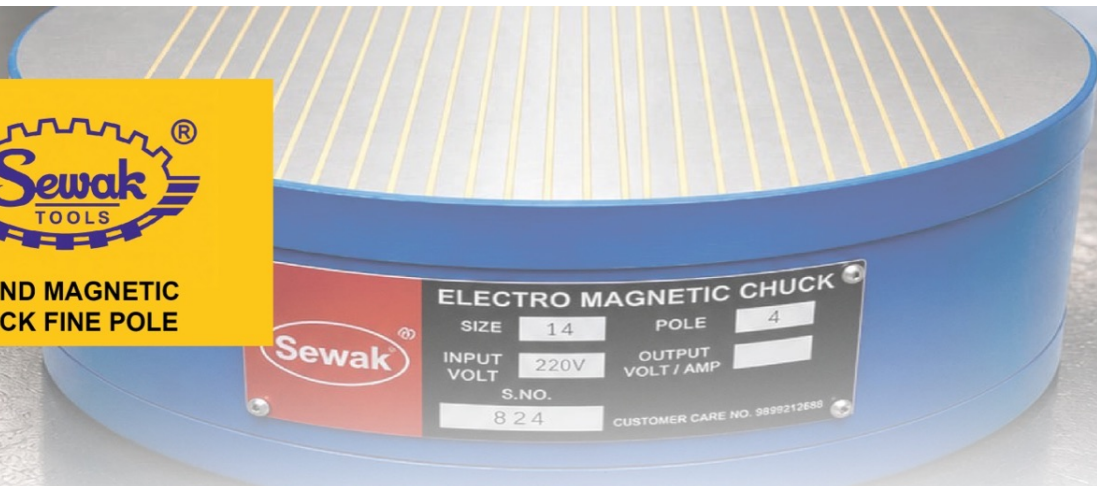


- Holding device for rotary surface grinding and also for lathe & cylindrical grinding.
- Each pole is having separate coil, as such very strong & even magnetic flux is generated
- Magnetic pull is 20-40% more than IS specification.
- Mag - D - Mag with variable control unit allow to neutralize the residual magnetism precisely.
- The chuck is tested for slipping force, waterproof test
- Temperature rise test, Electrical & Demagnetizing test.

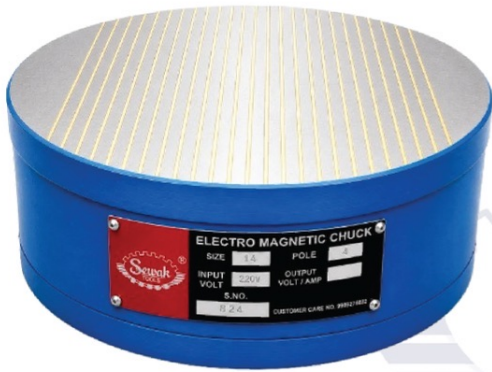
Code No.	Size in (inches)	Size in mm (L x W x H)	Price in (Rupees)	Price in
REMCCL-8	8"	200 x 110	5	28000
REMCCL-10	10"	250 x 110	6	33000
REMCCL-12	12"	300 x 110	8	48000
REMCCL-14	14"	350 x 110	9	68000
REMCCL-16	16"	400 x 110	10	88000
REMCCL-18	18"	450 x 110	12	102000
REMCCL-20	20"	500 x 110	14	120000
REMCCL-24	24"	600 x 110	18	180000
REMCCL-28	28"	700 x 110	20	240000



**ROUND MAGNETIC  
CHUCK FINE POLE**



## ROUND ELECTRO MAGNETIC CHUCK FINE POLE POLE PITCH 4 + 1 mm



- Holding device for rotary surface grinding and also for lathe & cylindrical grinding.
- Each pole is having separate coil, as such very strong & even magnetic flux is generated
- Magnetic pull is 20-40% more than IS specification.
- Mag - D - Mag with variable control unit allow to neutralize the residual magnetism precisely.
- The chuck is tested for slipping force, waterproof test
- Temperature rise test, Electrical & Demagnetizing test.

Code No.	Size in (inches)	Size in mm (L x W x H)	Price in (Rupees)
REMCCCL-8	8"	200 x 110	42,000
REMCCCL-10	10"	250 x 110	50,000
REMCCCL-12	12"	300 x 110	72,000
REMCCCL-14	14"	350 x 110	1,02,000
REMCCCL-16	16"	400 x 110	1,32,000
REMCCCL-18	18"	450 x 110	1,55,000
REMCCCL-20	20"	500 x 110	1,80,000
REMCCCL-24	24"	600 x 110	2,70,000
REMCCCL-28	28"	700 x 110	3,60,000



**SINE PLATE WITH  
MAGNETIC CHUCK**



## SINE PLATE WITH MAGNETIC CHUCK



- Used for precision measurement. Setting of angles & light machining.
- Accuracy for squareness, flatness & parallelism within 0.005mm upto 200L & 0.010mm upto 450L.
- Angle can be set within +5 seconds.
- Center distance between roller is within 0.004mm
- Made from high quality alloy steel.
- Hardness 60+HRC & tempered.
- Magnetic table for job holding.
- Firm hinged clamp to reduce possibility of distortion
- Magnetic pull is 20-40% more than IS specification.

Code No.	Size in mm	Price in Aluminium Laminated Plate Pole Pitch 5 (4+1)	Price in Brass Laminated Plate Pole Pitch 2 (1.5+,5)
SPMC-66	6 x 6	27000	39000
SPMC-86	8 x 6	32000	44000
SPMC-106	10 x 6	37000	54000
SPMC-126	12 x 6	44000	60000
SPMC-186	18 x 6	68000	96000



**MAGNETIC VEE BLOCK  
"ULTRA PRECISIO"**

## MAGNETIC VEE BLOCK "ULTRA PRECISION" Sewak Brand)



- Sewak" Brand Ultra Precision Magnetic Vee Block.
- Uniform and Strong Magnetic pull to all the surface Top Bottom & V Faces.
- Accurate for Flatness Squareness & Parallelism within 0.005 upto 150 & 0.010mm for 200 L
- Hardness above 55-60 HRC with Fully Hardened
- Supplied in matched pair.
- Easy "ON-OFF" Knob.

Code No.	V Size (mm)	Size in mm (L x W x H)	Number of Pole	Price in (Rupees)
MVB-S2	30	70× 50×65	37	7000
MVB-H2	30	70× 50× 65	37	9000
MVB-S3	38	80 × 60 × 70	47	8200
MVB-H3	38	80× 60 ×70	47	11500
MVB-S4	50	100 × 75× 95	62	11500
MVB-H4	50	100 × 75 × 95	62	11500
MVB-S6	50	150 x 75 x 95	62	22000
MVB-H6	50	150 × 75 × 95	62	32000
MVB-S8	72	200× 100×150	90	60000
MVB-H8	72	200× 100×150	90	78000



COLLETS



## PRECISION ER COLLETS

Code No.	Size Range D			Clamping Cap. Per Set		Each Collet Collapse by	D	L	PRICE RS
	From	To	In Steps	From	To				
ER-8	1	5	0.5	0.5	5.0	0.5	8.5	13.5	500
ER-11	1	7	0.5	0.5	7.0	0.5	11.5	18	500
ER-16	1	10	1	0.5	10.0	1.0	17.0	27	400
ER-20	1	13	1	1.0	13.0	1.0	21.0	31	400
ER-25	2	16	1	1.0	16.0	1.0	21.0	35	400
ER-32	3	20	1	2.0	20.0	1.0	38.0	40	500
ER-40	4	26	1	3.0	3.0	1.0	41.0	46	600
ER-50	12	34	2	10.0	10.0	20	52.0	60	1600



## MILLING COLLETS

TYPE	SIZE RANGE		PRICE
	MM	INCH	
M1TR (R8)	2-25	1/8" - 1"	450

## R8 SHANK DRILL CHUCK ARBOR (M1TR)

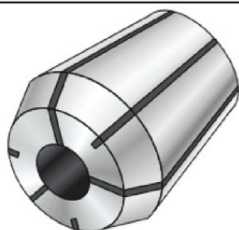


Code No.	L	D	PRICE
R8 B1B	136.0	31.75	550
R8 JT6	136.5	31.75	550

## R8 MT SLEEVE (M1TR)



Code No.	Shank & Chuck Mount	L	D	Code No.
MTR-1	MT-	118	31.75	750
MTR-2	MT-2	122	31.75	750
MTR-3	MT-3	180	31.75	950



## E - 40 SERIES COLLET

TYPE	SIZE RANGE		PRICE
	MM	INCH	
E-40	2-25	1/8" - 1"	450



**MAGNETIC BASE**



**MAGNETIC BASE**  
**“Standard” / “Fine Adjustment”**

Code No.	Magnetic Pull
MBP 40 (S1,S2)	40 KG
MBP 40 (F1)	40 KG



**MAGNETIC BASE**  
**“Standard” / “Fine Adjustment”**

Code No.	Magnetic Pull
MBP 40 (S1)	40 KG
MBP 40 (F1)	40 KG



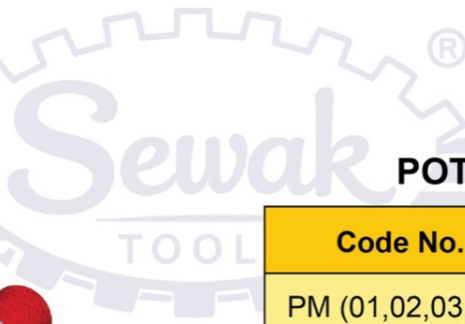
**MAGNETIC BASE**  
**“Universal” / “Flexible” / “Universal”**

Code No.	Magnetic Pull
MBP 80 (U1)	80 KG
MBP 80 (FL)	80 KG
MBP 140 (U1)	140 KG



### MAGNETIC HOLD FAST

Code No.	Magnetic Pull
MHF (01,02,03,04)	35, 60, 110, 180 KG



### POT MAGNETIC

Code No.	Magnetic Pull
PM (01,02,03,04)	2, 3, 5, 14 KG



### MAGNETIC HOLDER CLAMP

Code No.	Magnetic Pull
MHC - 01	80 KG



### MAGNETIC LINK



Code No.	Magnetic Pull
ML 01	20 KG each piece



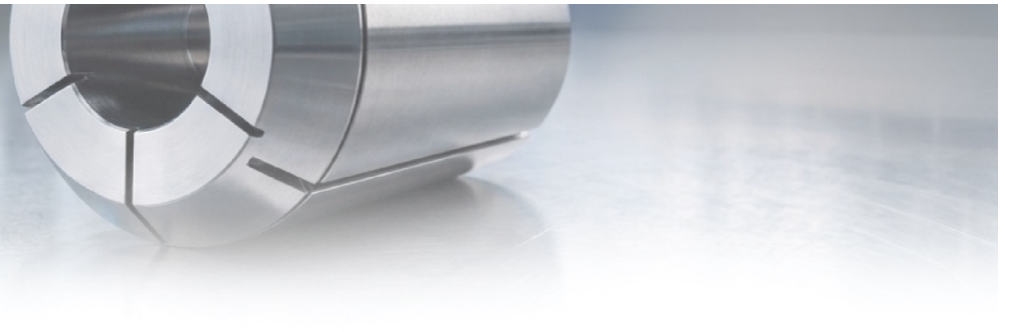
### POT MAGNETIC

Code No.	Magnetic Pull
MP 01	80 KG each piece



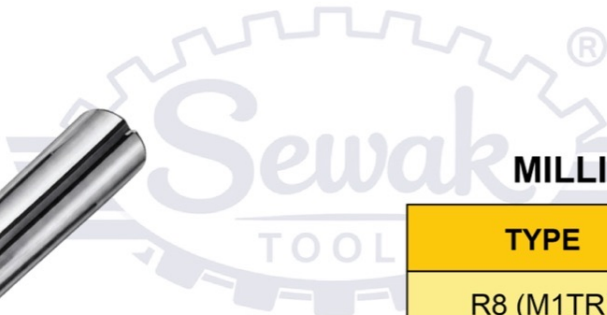
### ER COLLET

TYPE ER	ER	SIZE
11, 16, 20	25, 32, 40	0.5MM TO 26MM



### MILLING COLLECT E-SERIES

TYPE	SIZE
E-40	3mm To 26mm, 1/8" To 1"



### MILLING COLLECT

TYPE	SIZE
R8 (M1TR)	3mm To 22mm, 1/8" To 7/8"



### TRAUB COLLECT

TYPE	SIZE
A-15, A-25, A-42	2mm To 42mm, 3/32" To 1 1/2"



### DRILL COLLECT (For Traub Machine)

TYPE	SIZE
A-3	2mm To 13mm, 3/32" To 1/2"



### SPLIT SLEEVE FOR DRILLS, TAPS & CENTRE DRILLS

TYPE	TYPE RANGE	DRILL SIZE	CENTRE DRILL
MT-1, MT-2, MT-3, MT-4	MT-4, MT-5, MT-6, MT-8 MT-10, MT-12, MT-14 MT-16, MT-18, MT-20 3/16", 1/4", 5/16", 3/8", 7/16", 1/2", 5/8" BSW/UNC	3mm To 14mm, 1/8" To 1/2"	BS-1, BS-2, BS-3, BS-4



### MT SHANK COLLECT CHUNK HOLDER

SHANK	COLLECT TYPE
MT-2, MT-3, MT-4	ER-32, ER-40, ER-40



SHANK COLLECT  
CHUNK HOLDER



### MT SHANK COLLECT CHUNK HOLDER

SHANK	COLLECT TYPE
MT-2, MT-3, MT-4	ER-32, ER-40, E-40



### MT SHANK COLLECT CHUNK HOLDER

SHANK	COLLECT TYPE
MT-2, MT-3, MT-4	ER-32, ER-40, E-40



### STRAIGHT SHANK COLLECT CHUNK HOLDER

SHANK SIZE	COLLECT TYPE
25mm, 32mm, 40mm	ER-25, ER-32, ER-40



**SHANK COLLECT  
CHUNK HOLDER**



**R8 SHANK (M1TR)  
COLLECT CHUNK HOLDER**



**COLLECT TYPE**

ER-32, ER-40, ER-40



**ISO SHANK COLLECT  
CHUNK HOLDER**

SHANK	COLLECT TYPE
ISO-30, ISO-40, E-40	ER-32, ER-40, E-40



**BT SHANK COLLECT  
CHUNK HOLDER**

SHANK	COLLECT TYPE
BT-30, BT-40, BT-50	ER-20, ER-25, ER-32, ER-40



CHUNK HOLDER



### CT SHANK COLLECT CHUNK HOLDER

SHANK	COLLECT TYPE
CT-30, CT-40, CT-50	ER-20, ER-25, E-32, ER-40



### BT SHANK EXTENDED COLLECT CHUNK HOLDER

SHANK	EXTENDED LENGTH
BT-40	70, 100, 125, 150mm
<b>COLLECT TYPE</b>	
ER-20, ER-25, ER-32, ER-40	



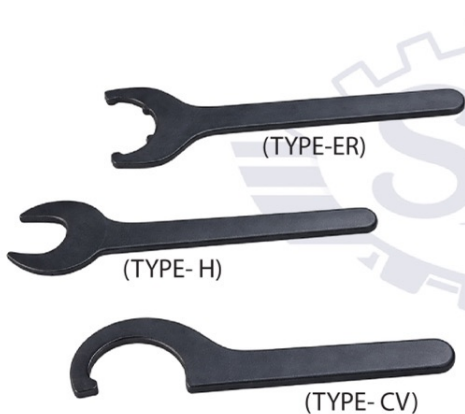
### CYLINDRICAL BABY COLLECT CHUNK HOLDER

SHANK SIZE	COLLECT TYPE
12mm, 16mm, 20mm	ER-11, ER-16, ER-20
<b>LENGTH SIZE</b>	
50, 70, 100, 150	



### NUTS FOR CHUNK HOLDER

A	RDO ER-SERIES	E-SERIES
ER-11, ER-20	ER-25, ER-32, ER-40	E-40



### NUT SPANNERS

TYPE - ER	TYPE - H	TYPE - C
ER-25, ER-32, ER-40	ER-11, ER-16, ER-20	E-40



### PULL STUDS

MAS
BT-30, BT-40, BT-50 (45% & 60%) DIN 69872 A & B



SHANK FACE



### R8 (M1TR) SHANK FACE MILL HOLDER

CUTTER SIZE
16, 22, 27, 32MM



### ISO SHANK FACE MILL HOLDER

SHANK	CUTTER SIZE
ISO-30, ISO-40, ISO-50	16, 22, 27, 32, 40mm



### ISO SHANK FACE MILL HOLDER

SHANK	CUTTER SIZE
BT30, BT-40, BT-50	16, 22, 27, 32, 40mm



**SHANK SIDE  
LOCK HOLDER**



**BT SHANK EXTENDED  
FACE MILL HOLDER**

SHANK	EXTENDED LIGHT	CUTTER SIZE
BT - 40	70, 100, 125, 150mm	22, 27



**NT ISO SHANK SIDE LOCK HOLDER**

SHANK	BORE SIZE
ISO-30, ISO-40, ISO-50	6, 8, 10, 12, 16, 20, 25, 32, 40MM



**BT SHANK SIDE LOCK HOLDER**

SHANK	BORE SIZE
BT-30, BT-40, BT-50	6, 8, 10, 12, 16, 20, 25, 32, 40MM

[www.sewaktools.com](http://www.sewaktools.com) / [sewaktools.sewak@gmail.com](mailto:sewaktools.sewak@gmail.com)



### CT SHANK SIDE LOCK HOLDER

SHANK	BORE SIZE
CT-30, CT-40, CT-50	6, 8, 10, 12, 16, 20, 25, 32, 40mm



### R8 (M1TR) MORSE TAPER SLEEVE

TYPE R8
MT-1, MT-2, MT-3



### ISO SHANK MORSE TAPER SLEEVE

SHANK	ID
ISO-30, ISO-40, ISO-50	MT-1, MT-2, MT-3, MT-4, MT-5



**BT SHANK MORSE  
TAPER SLEEVE**

SHANK	ID
BT-30, BT-40, BT-50	MT-1, MT-2, MT-3, MT-4, MT-5



**CT SHANK MORSE  
TAPER SLEEVE**

SHANK	BORE SIZE
CT-30, CT-40, CT-50	6, 8, 10, 12, 16, 20, 25, 32, 40MM



**ECONOMIC LIVE CENTRE**

MT	CODE NO.
1, 2, 3, 4, 5, 6	S-101, 102, 103, 104, 105, 106



### HEAVY DUTY LIVE CENTRE

MT	CODE NO.
3, 4, 5, 6	T-103, 104, 105, 106



### HIGH SPEED LIVE CENTRE STANDARD POINT

MT	CODE NO.
2, 3, 4, 5	H-202, 203, 204, 205



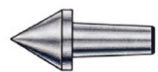
### HIGH SPEED LIVE CENTRE EXTENDED POINT

MT	CODE NO.
2, 3, 4, 5	H-212, 213, 214, 215



**HIGH SPEED LIVE CENTRE  
INTERCHANGEABLE**

MT	CODE NO.
3, 4, 5	E-403, 404, 405



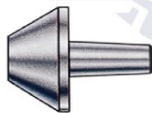
STANDARD POINT  
CODE No. SP-3, 4, 5



CARBIDE POINT  
CODE No. CT-3, 4, 5



EXTENDED POINT  
CODE No. EP-3, 4, 5



BULL NOSE POINT  
CODE No. BP-3, 4, 5

**INTERCHANGEABLE  
INSERTS**

FOR USEABLE MT
3, 4, 5



**POINT DRIFTER**

CODE NO.
E-403, 404, 405



**MINI LIVE CENTRE  
HIGH SPEED**



**MINI LIVE CENTRE HIGH SPEED  
(SMALL BODY) STANDARD POINT**

MT	CODE NO.
2, 3, 4	M-302, 303, 304



**MINI LIVE CENTRE HIGH SPEED  
(SMALL BODY) EXTENDED POINT**

MT	CODE NO.
2, 3, 4	M-312, 313, 314



**DEAD CENTRE  
CARBON STEEL**

MT	CODE NO.
1, 2, 3, 4, 5, 6	DCS-01, 02, 03, 04, 05, 06



DEAD CENTRE



**DEAD CENTRE  
CARBON TIPPED**

MT	CODE NO.
1, 2, 3, 4, 5, 6	DCT-01, 02, 03, 04, 05, 06



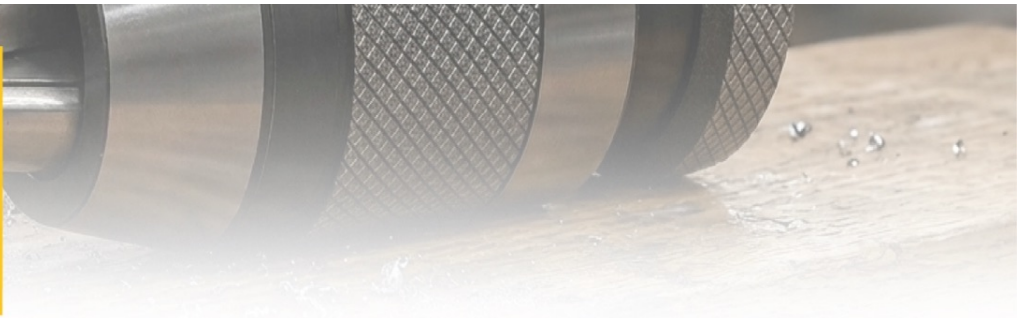
**DEAD CENTRE  
(HALF CENTRE) CARBON STEEL**

MT	CODE NO.
1, 2, 3, 4, 5, 6	DCS-11, 12, 13, 14, 15, 16



**DEAD CENTRE  
(HALF CENTRE) CARBIDE TIPPED**

MT	CODE NO.
1, 2, 3, 4, 5, 6	DCT-11, 12, 13, 14, 15, 16



**DEAD CENTRE  
CARBIDE TIPPED (WITH PULL NUT)**

MT	CODE NO.
2, 3, 4, 5, 6	DCT-102, 103, 104, 105, 106



**PIPE CENTRE**

MT	CODE NO.
2, 3, 4, 5	PC-2, 3, 4, 5



**PRECISION KEYLESS DRILL CHUNK**

DRILL CHUNK SIZE	CODE NO.	MOUNTING TAPER
1, 2, 3, 4, 5, 6	DCP-01, 02, 03, 04, 05, 06, 07	JACOBS, DIN STANDARD



SHANK DRILL  
CHUNK ARBOR



### MT SHANK DRILL CHUNK ARBOR

SHANK MT	CODE NO.	CHUNK MOUNT
2, 3, 4, 5	DCA-M1, M2, M3, M4, M5, M6, M7	JT-3,6 BT12, B16



### STRAIGHT SHANK DRILL CHUNK ARBOR

SHANK SIZE	CODE NO.	CHUNK MOUNT
20, 32, 40mm	DCA-S1, S2, S3, S4, S5	JT-3,6 BT12, B16



### R8 SHANK DRILL CHUNK ARBOR (M1TR)

MOUNTING TAPER	CODE NO.	CHUNK MOUNT
WITH JACOBS, & DIN TAPER	BCA-R1, R2	R8 B-16, R8 JT-6



SHANK DRILL



### ISO SHANK DRILL CHUNK ARBOR

SHANK	CODE NO.	CHUNK MOUNT
ISO-30, 40, 50	DCA-N1, N2, N3, N4, N5, N6	B-16, JT-6



### BT SHANK DRILL CHUNK ARBOR

SHANK	CODE NO.	CHUNK MOUNT
BT-30, 40, 50	DCA-B1, B2, B3, B4, B5, B6	B-16, JT-6



### MT SHANK THRED MOUNT DRILL ARBOR

SHANK	CODE NO.	CHUNK MOUNT
MT-2, 3, 4	DCA-T1, T2, T3, T4	3/8 X 24UNF, 1/2 X 24UNF



### PRECISION DRILL SLEEVE

MORSE TAPER	CODE NO.
2/1, 3/1, 3/2, 4/1, 4/2, 4/3, 5/3, 5/4, 6/4, 6/5	PDS-01, 02, 03, 04, 05 06, 07, 08, 09, 10



### EXTENSION SOCKET

MORSE TAPER	CODE NO.
1/1, 1/2, 2/1, 2/2, 2/3, 3/2, 3/3, 3/4, 4/2, 4/3, 4/4, 4/5, 5/3, 5/4, 5/5, 6/4, 6/5	ES-11, 12, 21, 22, 23, 32, 33, 34, 42, 43, 44, 45, 53, 54, 55, 64, 65



COMPARATOR STAND



**COMPARATOR STAND**

CODE NO.

CS- 01, 02



**COMPARATOR STAND**

CODE NO.

F1, F2



**COMPARATOR STAND**

CODE NO.

CS- G1



**COMPARATOR STAND**

CODE NO.

CSD- G1

# **GIANT** ENGINEERING TOOLS



# PRODUCT CATALOGUE

## MAGNETIC TRANSFER BLOCKS



- Used as an accessory for magnetic chuck to clamp thin & odd shape jobs
- Simplest method of extending the magnetic flux of magnetic chuck with parallel poles to support the ob.
- Maximum flux transformation when placed parallel to pole lines.
- 90 V provided for round job.
- Perfectly ground within 5 microns & supplied in matched pair.

Code No.	Type	Size in (inches)	Unit	Price in (Rupees)
MTB-01	Flat	100 x 50 x 25	Match Pair	6400
MTB-02	Vee Type	48 x 58 x 46	Match Pair	10500
MTB-03	Vee Type	110 x 58 x 46	Single	9000
MTB-04	Flat	150 x 75 x 25	Match Pair	14000
MTB-05	Flat	300 x 75 x 25	Match Pair	18000
MTB-06	Vee Type	150 x 75 x 50	Match Pair	18000
MTB-07	Flat	300 x 75 x 25	Match Pair	18000

**GIANT**  
ENGINEERING TOOLS  
STEEL VEE  
BLOCK & CLAMP

## STEEL VEE BLOCK & CLAMP



- Steel Vee Blocks are made from special tool steel hardened & precision ground to extreme accuracies
- The Vee Block are Central. Parallel and square with the ends & sides
- Supplied in matched pairs with 2 clamps
- Squareness, Parallelism 0.005mm

ENGINEERING TOOLS

Code No.	Size in (inches)	Price in (for case hard)	Price in (for EN-31)
SVB-2	40 x 30 x 30	1050.00	1400
SVB-3	50 x 37 x 37	1400.00	1800
SVB-4	63 x 48 x 48	2400.00	4400
SVB-5	80 x 60 x 60	4000.00	7000
SVB-6	100 x 75 x 75	5500.00	11000

**GIANT**  
ENGINEERING TOOLS  
MAGNETIC  
VEE BLOCK



## MAGNETIC VEE BLOCK "HARDENED & GROUND" (Giant Brand)

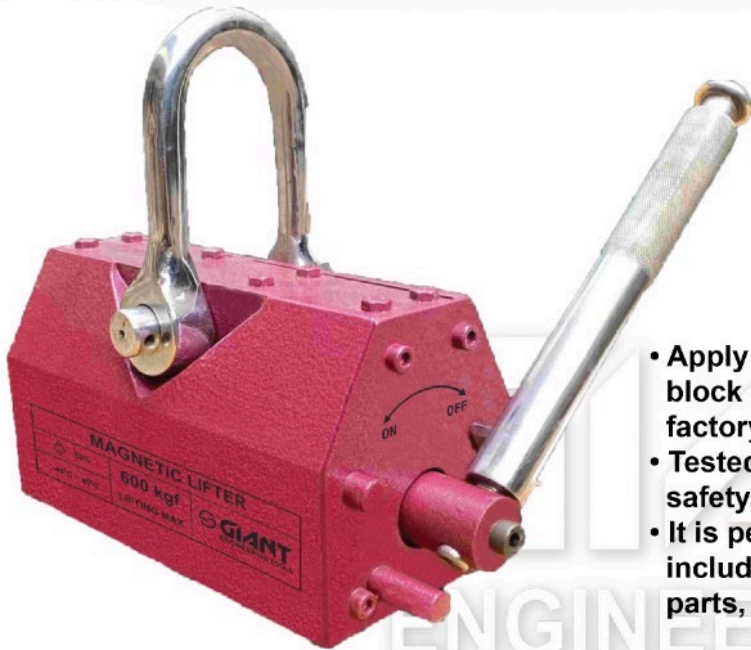


- Giant" Brand Uniform and Strong Magnetic pull to all the surface, Top Bottom & V Faces.
- Accurate for Flatness Squareness & Parallelism within 0.005 upto 150 & 0.010mm for 200 L
- Hardness above 55-60 HRC with Fully Hardened
- Supplied in matched pair.
- Easy "ON-OFF" Knob.

Code No.	Size in L x W x H	V Size mm	Number of Pole	Price In (Rupees)
932-S	70 x 50 x 65	30	37	4400
932-H	70 x 50 x 65	30	37	5600
933-S	80 x 60 x 70	38	47	5600
933-H	80 x 60 x 70	38	47	7000
934-S	100 x 75 x 95	50	62	6200
934-H	100 x 75 x 95	50	62	9600
936-S	150 x 75 x 95	50	62	9000
936-H	150 x 75 x 95	50	62	13000
938-S	200 x 100 x 150	72	90	36000
938-H	200 x 100 x 150	72	90	56000

**GIANT**  
ENGINEERING TOOLS  
PERMANENT  
MAGNETIC LIFTER

## PERMANENT MAGNETIC LIFTER

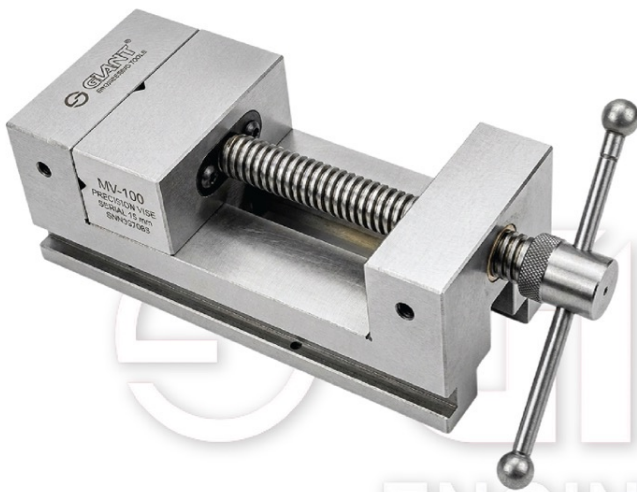


- Apply this magnetic lifter to move steel plate , block or round steel, and iron material in your factory.
- Tested to hold 3 times, the rated load of maximum safety.
- It is perfect for loading or unloading most workpiece including press moulds, plastic molds, machine parts, ext...

Code No.	Size in mm L x W x H	Capacity Kg.	Rated load of safety	Price Rs.
PML-100	110 x 65 x 75	100		9000
PML-300	180 x 95 x 100	300		18000
PML-600	255 x 120 x 125	600	X3 time	44000
PML-1000	280 x 170 x 175	1000		56000
PML-2000	425 x 220 x 220	2000		90000
PML-3000	570 x 220 x 225	3000		160000

**GIANT**  
ENGINEERING TOOLS  
STEEL VICE  
SCREW TYPE

## PRECISION TOOLMAKER STEEL VICE SCREW TYPE

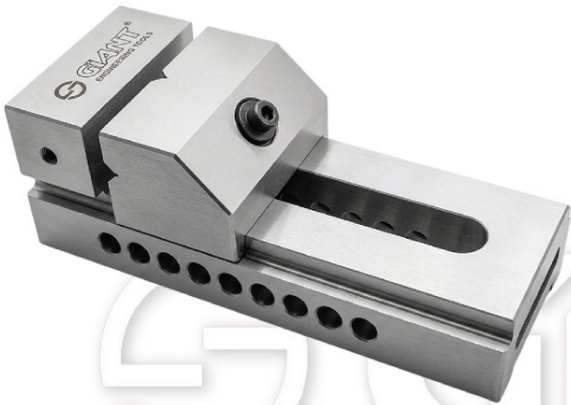


- Manufactured from Selected Tool Steel Hardened 55-60 HRc.
- Accuracy for Squareness, Flatness & Parallelism within 0.010mm
- Wear Plate at Bottom to prevent lifting of jaw.
- Hardened clamping screw with square thread & gun metal nut.
- Tenon at bottom to allow easy alignment with machine bed.

Code No.	Size in L x W x H	Jaw Depth	Jaw Opening	Price in (Case Hard)	Price in (EN-31 Hard)
VST-33	190 x 75 x 75	38	0-80	6200	9600
VST-34	210 x 75 x 75	38	0-100	7400	11500
VST-44	230 x 100 x 90	45	0-100	8200	13000
VST-45	255 x 100 x 90	45	0-125	9600	15200
VST-67	360 x 150 x 90	50	0-175	26000	40000

MV100  
PRECISION VISE  
SERIAL NO. SNN3S7068

## PRECISION TOOLMAKER STEEL VICE SCREW LESS

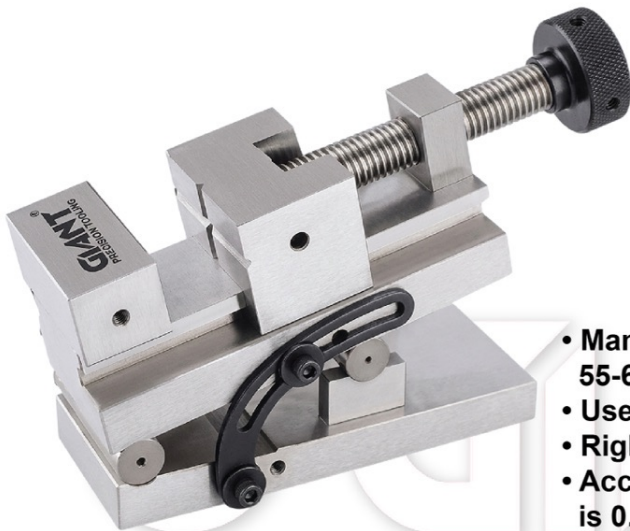


- Manufactured from Selected Tool Steel Hardened 55-60 HRc.
- Accuracy for Squareness, Flatness & Parallelism within 0.005mm.
- The moving jaw of vice is slightly narrower than the base to enable vice to be used on its sides.
- These model are specially designed to provide maximum.
- Holding power and highly repeatable positioning due to their forward and downward clamping action.

Code No.	Size in mm L x W x H	jaw Depth	jaw Opening	Price in (Case Hard)	Price in (EN-31 Hard)
VSL-15	100 x 35 x 40	20	0-45	2400	3800
VSL-23	140 x 48 x 50	25	0-75	3000	4800
VSL-25	170 x 63 x 60	30	0-90	3600	5800
VSL-34	190 x 75 x 70	35	0-100	4000	6200
VSL-45	230 x 100 x 80	40	0-125	7000	11000
VSL-56	300 x 125 x 100	50	0-160	12000	18000
VSL-68	350 x 150 x 100	50	0-200	22000	34000

**GIANT**  
ENGINEERING TOOLS  
PRECISION  
SINE VISE (Screw Type)

## PRECISION SINE VISE (Screw Type)



- Manufactured from Selected Tool Steel Hardened 55-60 HRc.
- Used for Precision Measurement. Setting of angles.
- Right angle grinding & light machining.
- Accuracy for Squareness, Flatness & Parallelism is 0.005mm.

ENGINEERING TOOLS

Code No.	Sine Distance	jaw Depth	jaw Opening	Price in (Case Hard)
SVST-33	100 mm	35	0-100	14000
SVST-44	125 mm	36	1-125	19500



## PRECISION STEP ANGLE PLATES



- These angle plates are invaluable for accurate work in tool room.
- Right angle machining & grinding.
- Made from single piece high quality alloy steel.
- Hardness -60 +2HRc
- Unique design to hold small cylindrical parts also.
- Provided with 24 tapped holes for clamping work pieces.
- Squareness, Flatness & Parallelism of all working faces within 5 microns.

Code No.	Size in mm L x W x H	Tapped Holes	Price in (Case Hard)	Price in (EN-31 Hard)
SAP-3	75 x 75 x75	M6 - 1	4500.00	5200
SAP-4	100 x 100 x100	M8 - 1.25	5500.00	6800
SAP-6	150 x 150 x 150	M8 - 1.25	9500.00	14000

## SINE TABLES



- Used for Precision measurement, setting of angles utilizing slip gauge.
- Accuracy for Squareness, Parallelism & Flatness is 0.005 mm upto 200l & 0.010 upto 450l.
- Angle can be set within  $\pm 5$  seconds.
- Centre distance between rollers is within 0.005mm.
- Made from high quality Alloy Steel.
- Hardness 60 + 2 HRc & Tempered.
- Firm hinged clamp to reduce possibility of distortion
- 6mm, 8mm tapped holes for job clamping.

Code No.	Size in mm L x W x H	Angular Range	Price in (EN-31 Hard)
ST-150	150 x 150 x 75	0-60	11000
ST-250	250 x 150 x 100	0-60	14000
ST-300	300 x 150 x 100	0-60	28000
ST-450	450 x 150 x 100	0-60	36000



**GIANT**  
ENGINEERING TOOLS

**ANGLE SINE DRESSER  
(With Gear Driven)**



## ANGLE SINE DRESSER (With Gear Driven)

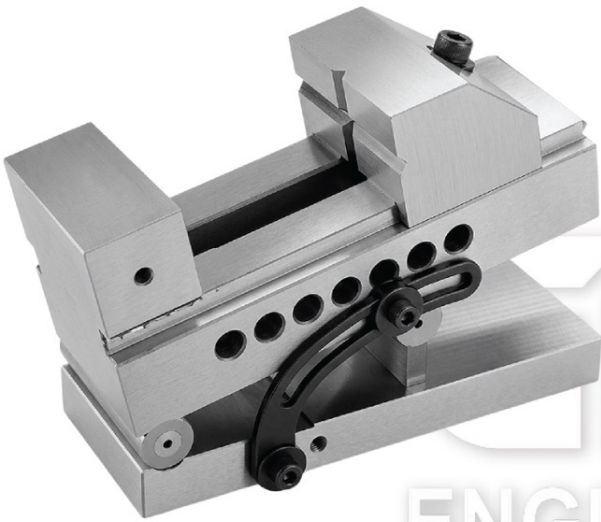


- Angle Sine Dresser, release screws on the both side and free to adjust any needed angle.
- Suitable for vertical or horizontal angles, Sine angle 0-60 degree and both are within 0.005mm accuracy
- Double axis accuracy is  $\pm 0.005$  mm.
- Provide gear driven and it is designed for better prevention for the beginner.

Code No.	Size in mm L x W x H	Travel Slide in mm	jaw Opening
ASD-G1	90 x 50 x 65	50	10500

**GIANT**  
ENGINEERING TOOLS  
PRECISION  
SINE VISE (Screw Less)

## PRECISION SINE VISE (Screw Less)



- Manufactured from Selected Tool Steel Hardened 55-60 HRc.
- Used for Precision Measurement. Setting of angles.
- Right angle grinding & light machining.
- Accuracy for Squareness, Flatness & Parallelism is 0.005mm.

ENGINEERING TOOLS

Code No.	Sine Distance	jaw Depth	jaw Opening	Price in (Case Hard)
SVST-33	100 mm	35	0-100	12000
SVST-44	100 mm	36	1-125	16000

**GIANT**  
ENGINEERING TOOLS  
ANGLE SINE  
DRESSER

## ANGLE SINE DRESSER



- Angle Sine Dresser, release screws on the both side and free to adjust any needed angle.
- Suitable for vertical or horizontal angles, Sine angle 0-60 degree and both are within 0.005mm accuracy
- Double axis accuracy is  $\pm 0.005$  mm.

Code No.	Size in mm L x W x H	Travel Slide in mm	Price in Rs.
ASD-M1	90 x 50 x 65	50	8000



Engineering Trust. **Delivering Excellence.**



**Guarantee :**

All the products manufactured by "Sewak Industries", are backed by a firm guarantee of the company. But, this guarantee would be void, once the product is tampered with (opened) or any magnetic item is dismantled.



**Specific Requirements :**

An order placed by customer with his own specifications can not be cancelled. If done so, then the customer will have to bear the cancellation charges and the cost incurred by the company in development of products.



**Sizes & Specifications :**

All rights are reserved by the company to change the size & specifications of any product to improve the quality and workmanship of the product.



**Sewak Industries (Regd.)**  
*(Manufacturer & Exporter of Engineering Tools)*

Production Unit :  
Export Promotion Industrial Park Zone  
Plat No. 402, Kundli, Sonapat, Haryana, INDIA

Contact: 91+9711055108, 91+9999249950, 91+95601 64955  
[www.sewaktools.com](http://www.sewaktools.com) / [sewaktools.sewak@gmail.com](mailto:sewaktools.sewak@gmail.com)